



**HaraBark**

# RESIN-BONDED STONE

INTEGRATED DESIGN | SEAMLESS CONNECTION | WATERPROOF | WEAR-RESISTANT | EASY INSTALLATION

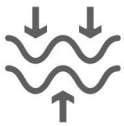






## RESIN-BONDED STONE

**HARDBARK**<sup>®</sup> Resin-Bonded Stone combines the natural beauty of stone with the durability of a resin bond, creating a strong, stable, and long-lasting surface. Engineered for both aesthetic appeal and practical performance, it resists shifting and erosion, unlike traditional gravel, while allowing water to flow through for effective drainage. Available in a wide range of colours and textures, **HARDBARK**<sup>®</sup> is ideal for driveways, walkways, and other applications, meeting environmental sustainability standards and offering both functional and decorative solutions.



**DURABILITY  
AND  
STABILITY**



**EFFECTIVE  
DRAINAGE**



**AESTHETIC  
CUSTOMIZA-  
TION**

### COLOUR RANGE



**14# PEARL WHITE**



**1# CORAL SAND**



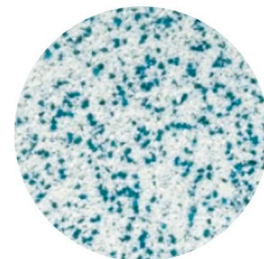
**16# BLACK SHADOW**



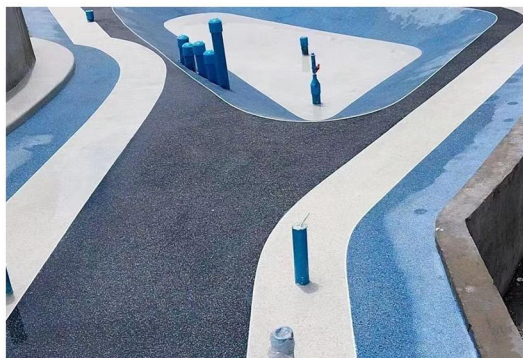
**20# SIERRA WHITE**



**17# CHINA WHITE**



**OCEAN AGATE**





## WALL CONSTRUCTION SCENARIO

1. The application temperature must not be lower than 5°C, with humidity less than 80%.
2. The moisture content of the substrate must not exceed 9%. For wall applications, a specialized primer must be used, with a pH value less than 10. Before application, ensure the substrate meets the required standards for coating preparation.
3. Resin-bonded stone products can only be applied after the primer is fully dried. Drying time may vary depending on temperature and humidity.
4. The product is ready to use and requires only one application layer, achieving a thickness equal to one layer of sand particles. For walls, wait until the coating is completely dry before applying the topcoat. Coating coverage:
  - a. **Fine sand (2mm-3mm): 3-6kg/m<sup>2</sup>, approximately 4-6m<sup>2</sup> per 25kg bucket.**
  - b. **Medium sand (2mm-4mm): 6-8kg/m<sup>2</sup>, approximately 3-4m<sup>2</sup> per 25kg bucket.**
  - c. **Coarse sand (4mm-6mm): 12-14kg/m<sup>2</sup>, approximately 1-2m<sup>2</sup> per 25kg bucket.**
  - d. **Coverage depends on thickness; usage will vary with thickness requirements.**
5. Before wall application, inspect the wall substrate to ensure it is flat and free of cracks. If the substrate is insufficient, apply a specialized primer and proceed with application only after it is fully dry.
6. Stir the product thoroughly with a power drill before use. Normally, water addition is unnecessary. If the product is too viscous for smooth application, add a small amount of water to adjust its consistency. However, avoid excessive water, as it may cause the product to sag.
7. Pay attention to application techniques. Ensure the product is evenly spread without overlaps. After the first layer is applied, wait until the wall is 60% dry, then smooth it out for a flat surface. For large-grain sand, multiple passes may be required for a smooth finish. If uneven application causes discoloration, wait for the wall to dry completely and reapply another layer to resolve the issue.
8. For exterior wall applications, ensure there is no rainfall within 3 days before and 5 days after application to prevent product damage. Use an exterior primer on the substrate before applying the exterior resin-bonded stone product. Once the product is dry, apply a specialized exterior topcoat.





## GROUND CONSTRUCTION SCENARIO

1. The application temperature must not be lower than 5°C, with humidity less than 80%.
2. The moisture content of the substrate must not exceed 9%. For ground construction, a primer must be used, with a pH value less than 10. Before application, ensure the substrate meets the required standards for coating preparation.
3. Resin-bonded stone products can only be applied after the primer is fully dried. Drying time may vary depending on temperature and humidity.
4. No need to dilute with water, ready to use. Apply one layer to achieve the required thickness, which should be at least the thickness of one grain of sand. For ground applications, wait until the coating is completely dry before applying the topcoat. Coating coverage:
  - a. **Medium sand (2mm-4mm): 6-8kg/m<sup>2</sup>**
  - b. **Coarse sand (4mm-6mm): 12-14kg/m<sup>2</sup>**
  - c. **Coverage depends on thickness; usage will vary with thickness requirements.**
5. Before ground construction, check the substrate to ensure it is flat and free of cracks. If the substrate is insufficient, apply a specialized primer and proceed with application only after it is fully dry.
6. For two-component ground products, mix the A/B component emulsions thoroughly before adding to the gravel. Stir until even before applying.
7. For single-component ground products, mix the emulsion with the gravel thoroughly before applying.
8. During construction, prepare two trowels: one for spreading the resin-bonded stone evenly across the surface, and the other for pressing and smoothing it. Ensure the surface is compacted and free of particles or loose sand. If the trowel becomes sticky during the process, clean it immediately or dip it in a small amount of soapy water for ease of use.
9. After construction, avoid stepping on the surface. The surface must be dry for 8-24 hours before it can be used normally.
10. If applying a black anti-stain topcoat, wait until the ground is fully dry before applying. Use a rubber trowel to smooth it. The curing time for the anti-stain topcoat is 3-5 days for light use, and full drying requires at least 7 days.
11. For outdoor ground construction, ensure there is no rainfall within 3 days before and 3 days after construction to prevent product damage.



# HARDBARK<sup>®</sup> ADDITIVE USAGE INSTRUCTIONS

## 1. HARDBARK Sealing Transparent Primer:

- A. Packaging:** 18kg/bucket, one bucket covers approximately 80m<sup>2</sup>.
- B. Application Scenarios:** Suitable for walls, facades, and other building surfaces, especially cement mortar, concrete, and other substrates, enhancing the adhesion of the coating.
- C. Usage Instructions:** Apply one coat with a roller. Each kilogram of primer covers about 5 m<sup>2</sup>. Allow drying before applying the topcoat. Avoid application in adverse weather conditions, and ensure the substrate is clean and dry.

## 2. HARDBARK Sanded Bonding Agent:

- A. Packaging:** 18kg/bucket, one bucket covers approximately 80m<sup>2</sup>.
- B. Application Scenarios:** Suitable for smooth surfaces like glass tiles, enhancing the adhesion of subsequent coatings.
- C. Usage Instructions:** Apply directly onto smooth substrates, allow to dry before proceeding with the next layer of paint. Ensure the surface is clean and free of grease. Each kilogram covers about 5m<sup>2</sup>.

## 3. HARDBARK Reinforcing Agent:

- A. Packaging:** 18kg/bucket.
- B. Application Scenarios:** Used for 3D wall applications to prevent paint from slipping off and to enhance the adhesion and durability of the stone coating.
- C. Usage Instructions:** Mix 1kg of reinforcing agent with 25kg of resin-bonded stone. Stir well with a handheld mixer. Optionally, add 1kg of water based on needs. After mixing, proceed with the application to ensure the coating is firm and durable.

## 4. HARDBARK Waterproofing Strengthener A+B:

- A. Packaging:** A and B components, 500g each, totaling 1kg/set.
- B. Application Scenarios:** Suitable for swimming pools, indoor bathrooms, and other water-prone areas, providing strong waterproof protection.
- C. Usage Instructions:** Add 1 set (1kg) of Waterproofing Strengthener A+B to 25kg of resin-bonded stone paint. Mix evenly and apply, ensuring the coating is uniformly covered for optimal waterproofing.



3.

## HARDBARK<sup>®</sup> ADDITIVE USAGE INSTRUCTIONS

### 5. HARDBARK Aurora Topcoat:

- A. Packaging:** 5kg/bucket.
- B. Application Scenarios:** Used for wall painting. After the resin-bonded stone application is dry, this topcoat enhances surface gloss and texture, achieving a marble-like effect. 1kg covers 4 m<sup>2</sup>, and 1 bucket (5kg) covers 20 m<sup>2</sup>.
- C. Usage Instructions:** After the resin-bonded stone layer is dry, use a polishing machine or vibration sander to smooth the surface. Then, apply the Aurora topcoat evenly, and finish by polishing with sandpaper and wool discs to achieve a natural marble effect.

### 6. HARDBARK Trowel-applied Topcoat:

- A. Packaging:** 18kg/bucket.
- B. Application Scenarios:** Used for wall or floor coating. After the resin-bonded stone application is fully dry, this topcoat enhances surface smoothness and texture, preventing dust from entering and contaminating the surface. 1kg covers 3-4 m<sup>2</sup>, and 1 bucket (18kg) covers 50-70 m<sup>2</sup>.
- C. Usage Instructions:** After the resin-bonded stone layer is completely dry, use a trowel to apply the topcoat directly, ensuring an even coating.

### 7. HARDBARK Grey Rubber Waterproof Coating:

- A. Packaging:** 18kg/bucket.
- B. Application Scenarios:** Used for indoor wall or floor applications. Apply directly onto the surface before the resin-bonded stone. After it is dry, this coating improves surface smoothness and texture, preventing dust contamination. 1kg covers 2-3 m<sup>2</sup>, and 1 bucket (18kg) covers 40-50 m<sup>2</sup>.
- C. Usage Instructions:** Roll the primer onto the substrate before applying the resin-bonded stone, ensuring an even coat.

## HARDBARK<sup>®</sup> RESIN-BONDED STONE STORAGE:

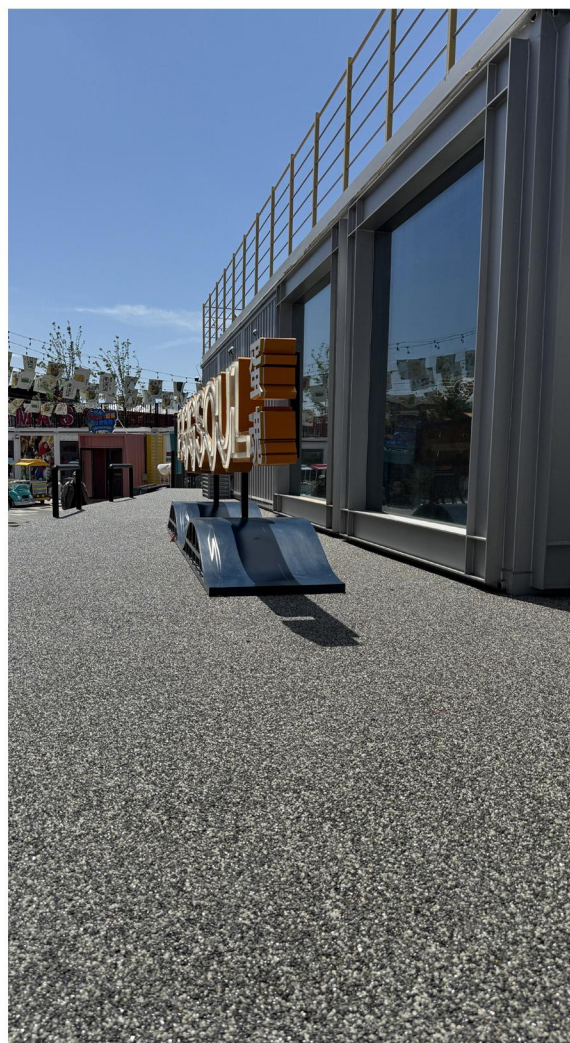
Store in a dry, cool, and ventilated place at temperatures between 5°C and 35°C.

### Note:

The product performance and application information provided above are obtained under specific conditions. Environmental factors may affect the performance of the coating during actual application



# HardBark®





# HardBark®

