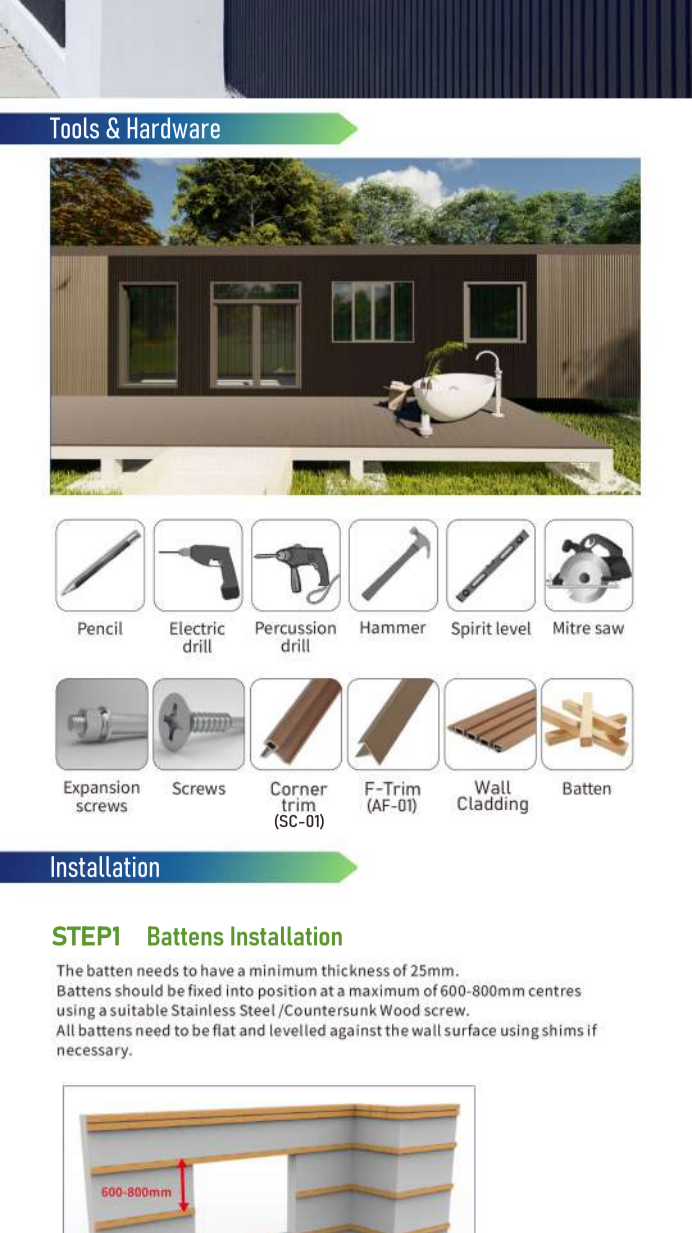


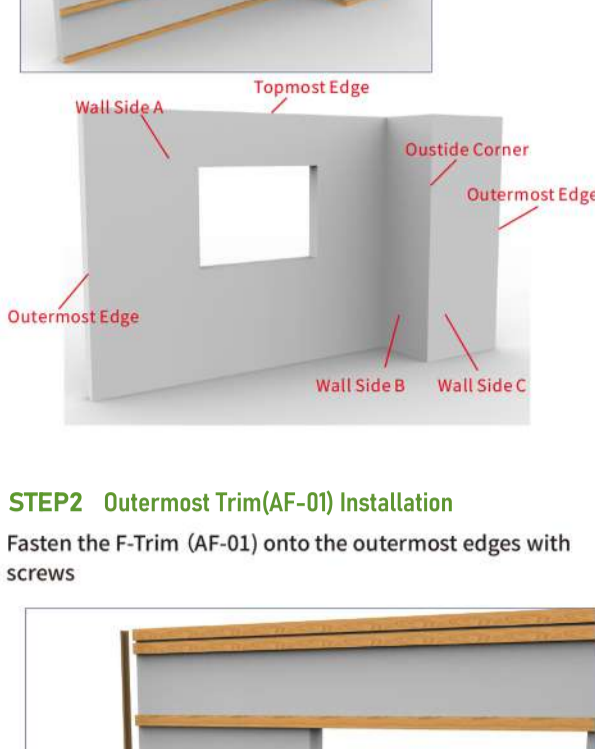
EXTERNAL WALL CLADDING

Installation Guide

<https://heritoncladding.com.au/>



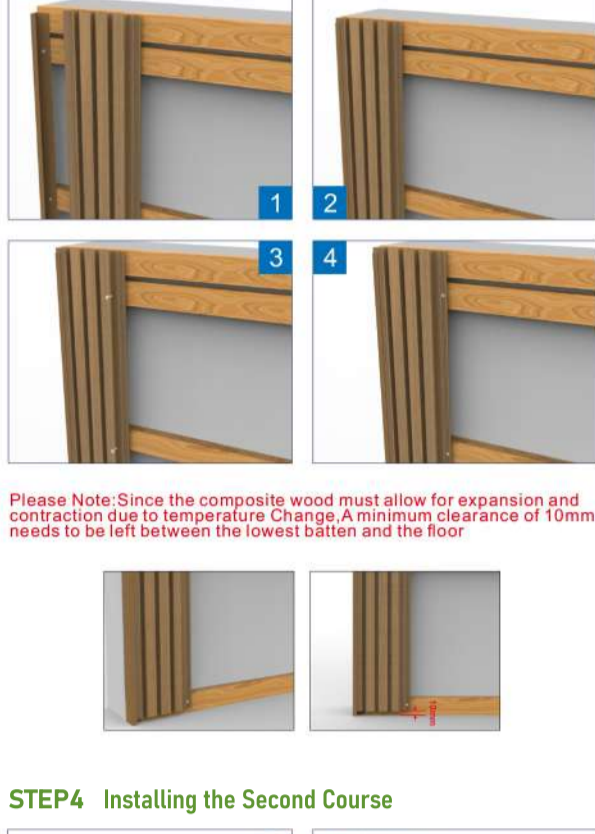
Tools & Hardware



Installation

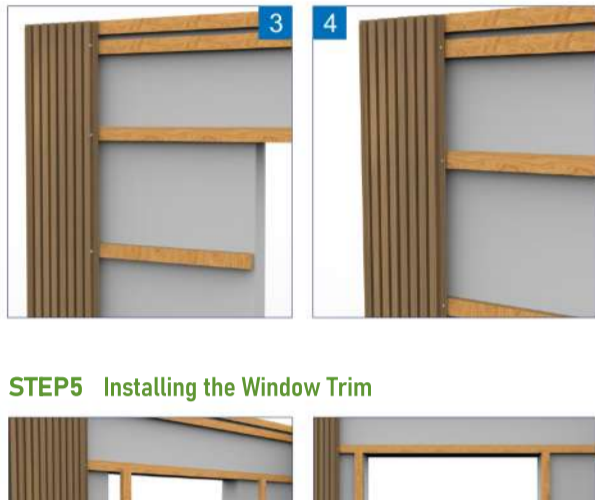
STEP1 Battens Installation

The batten needs to have a minimum thickness of 25mm. Battens should be fixed into position at a maximum of 600-800mm centres using a suitable Stainless Steel / Countersunk Wood screw. All battens need to be flat and levelled against the wall surface using shims if necessary.



STEP2 Outermost Trim(AF-01) Installation

Fasten the F-Trim (AF-01) onto the outermost edges with screws

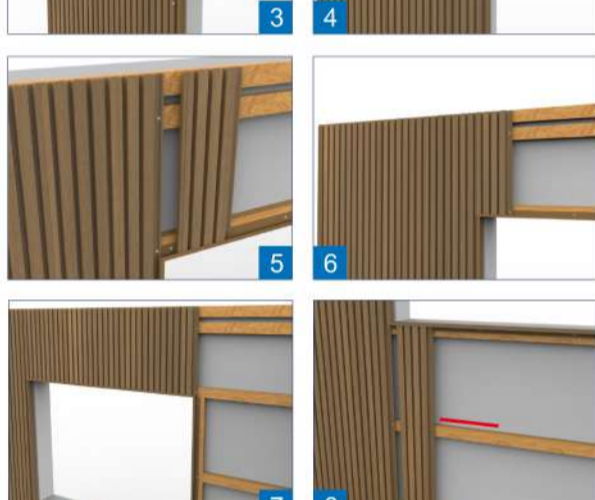


STEP3 Installing the First Course

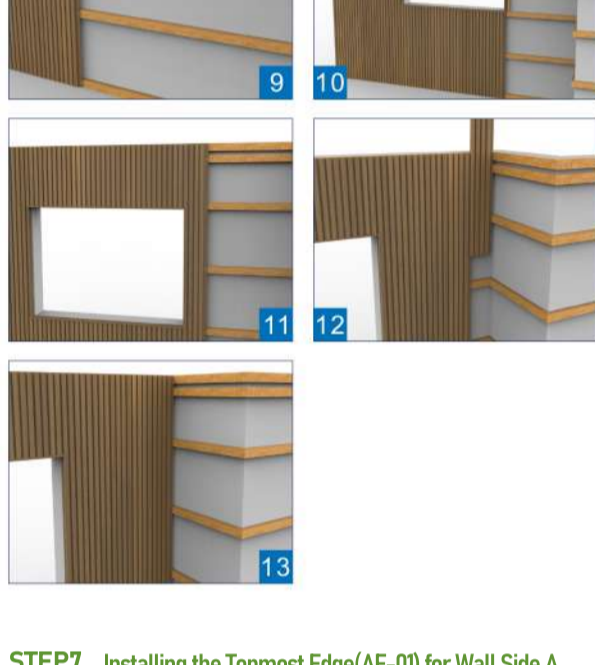
Put the first Wall Cladding Board in place, then face fix it the side next to the trim onto the batten with screws



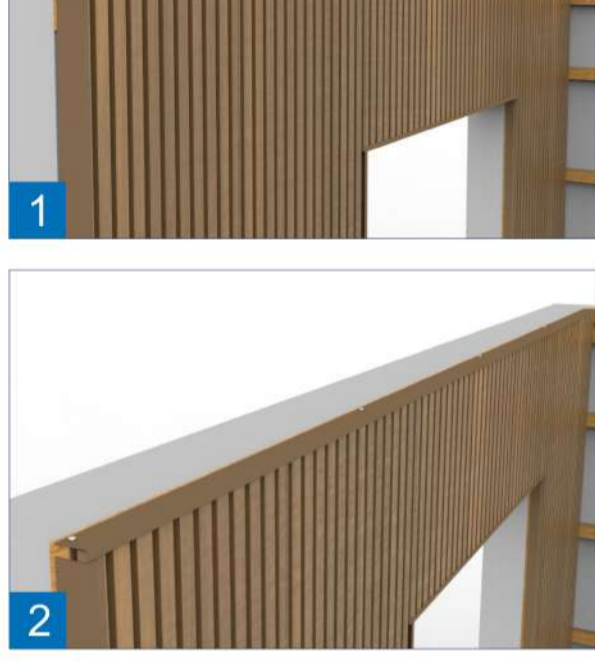
Please Note: Since the composite wood must allow for expansion and contraction due to temperature change. A minimum clearance of 10mm needs to be left between the lowest batten and the floor



STEP4 Installing the Second Course



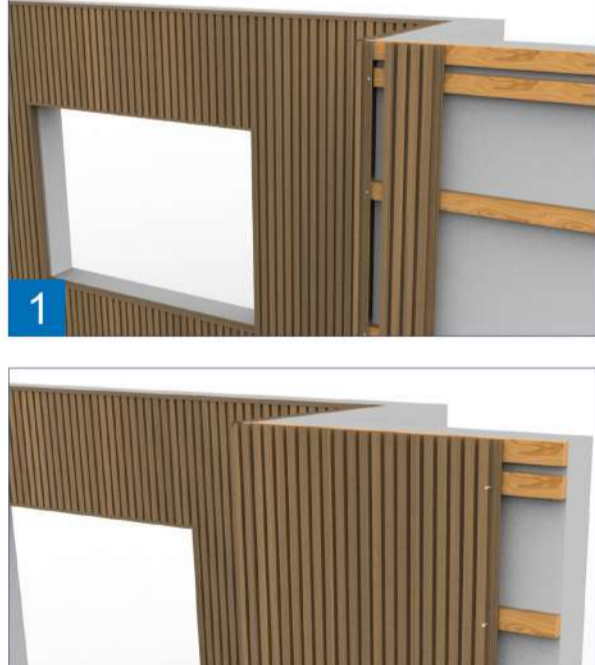
STEP5 Installing the Window Trim



STEP6 Continuing the Remaining Installation Around the Window



STEP7 Installing the Topmost Edge(AF-01) for Wall Side A



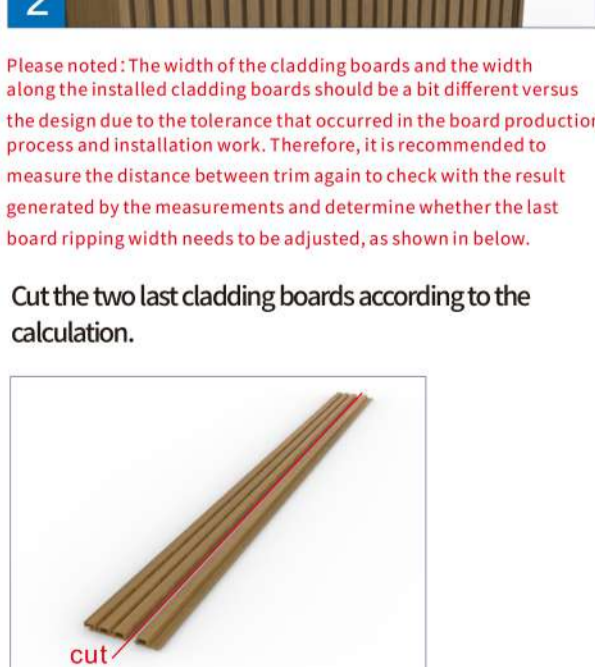
STEP8 Installing the Outside Corner trim (SC-01)



STEP9 Installing the Wall Side B



STEP10 Installing the Topmost Edge(AF-01) for Wall Side B



STEP11 Installing the Wall Side C



STEP12 Installing the Outmost Edge for Wall Side C



STEP13 Installing the Last Board



Please noted: The width of the cladding boards and the width along the installed cladding boards should be a bit different versus the design due to the tolerance that occurred in the board production process and installation work. Therefore, it is recommended to measure the distance between trim again to check with the result generated by the measurements and determine whether the last board ripping width needs to be adjusted, as shown in below.

Cut the two last cladding boards according to the calculation.

STEP14 Installing the Topmost Edge(AF-01) for Wall Side C

STEP15 Installation Finished

